

# Quick Start Guide

## Ethernet I/O Remote Module

### Model A-18xx



### 1. Wiring table

(R)+VS	Power Positive
(B)GND	Power Negative
RJ-45	Ethernet

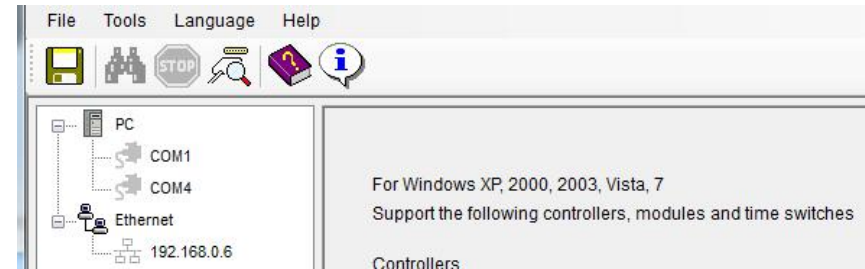
### 2. Software Installation

Before the regular use, must finish setup "ATC Utility". And prepare below items to finish the setup.

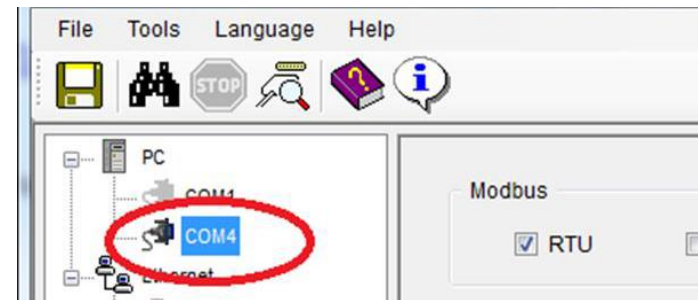
### 3. Configure the A-18xx

A-18 series Ethernet I/O module had 2 protocols to setup the parameter.

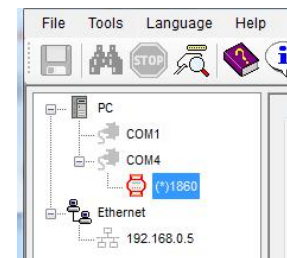
- ① Over the USB port.
  - ② Over the Ethernet port.
- 1) Turn the back switch to Init mode and power on the A-18xx. Over the USB or Ethernet to link A-18xx and PC. (Ethernet initial IP 192.168.1.1)



- 2) Open the ATC Utility software.
- 3) Click the "refresh button" to refresh the COM port.
- 4) Click the related COM port.



- 5) Click the "Search button" to search module.



- 6) Ethernet Settings menu can setup below parameter:  
 Description: Device name  
 Verified Codes: password verified  
 Device ID: 1-255 IP: assign IP address  
 When complete above parameter setting, click Update.

System Settings Ethernet Settings Alias

Description OpenWrt

Verified Codes 12345678 Device ID 1

Protocol Modbus TCP/IP MAC Address 00-2D-00-28-47-10

DHCP

IP Address

IP 192 . 168 . 0 . 55

Mask 255 . 255 . 255 . 0

Gateway 192 . 168 . 0 . 1

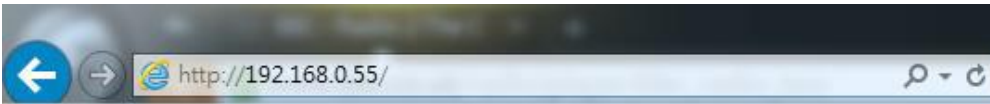
Port Local 502 Remote 2000

Restore Update

- 7) Alias menu can define Input/output name, when complete define click Update.
- 8) Can Setup the related parameter from above figures. When finish the setup, must turn the switch to Normal mode and Re-Power on the device, Done.

#### 6. WEB Browser online monitor and control

1. Turn the A-18 series Ethernet I/O module's switch to Normal mode and power on, over the Ethernet to link PC (note, maybe need the Router or HUB to meet this operation). Open the web browser and type in the device IP address.



When finish the IP address type in the IP address, the web browser will show below graph.

The below graph will show the device's real time status, involve the device name, Input/Output status. 0 is mean OFF, 1 is mean ON.

Also can modify the DO status on the web browser, when finish the modify please type in the Verify Code and click Apply to finish above operation.

Title: OpenWrt

FW: 1.18

MAC: 00:2D:00:28:47:10

IP : 192.168.0.55

Subnet: 255.255.255.0

Gateway: 192.168.0.1

DI-0: Sensor1 0

DI-1: Sensor2 0

DI-2: Sensor3 0

DI-3: Sensor4 0

DI-4: Sensor5 0

DI-5: Sensor6 0

DI-6: 0

DI-7: 0

DO-0: Alarm 0

DO-1: Motor 0

DO-2: Fan 0

DO-3: Tower 0

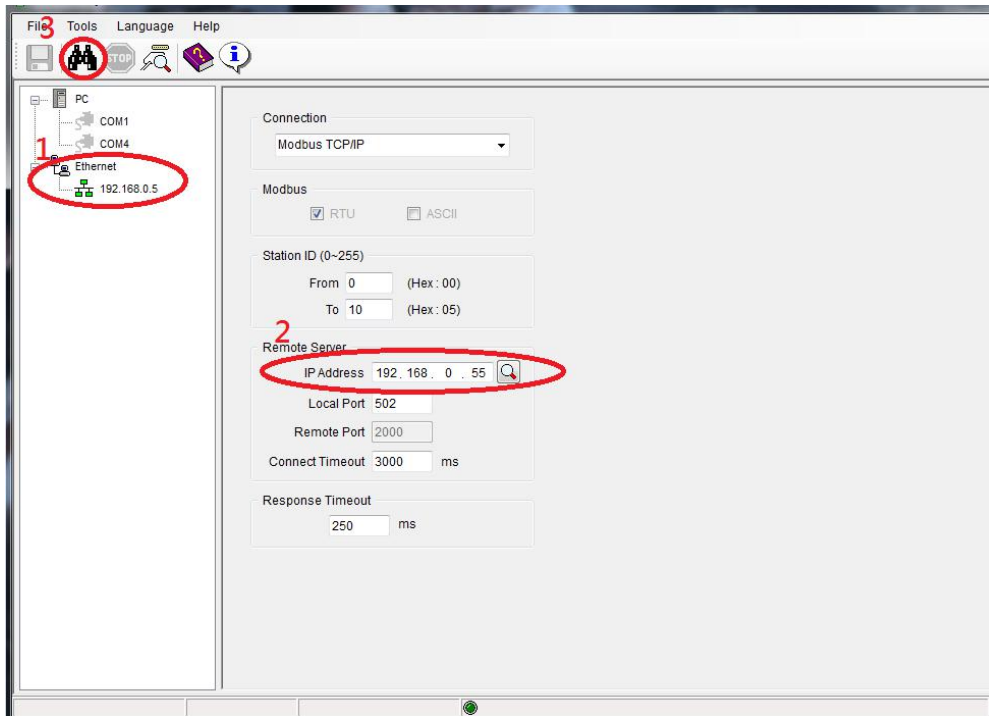
Verified Code: \*\*\*\*\*

Apply


[1:Digital I/O signal status 'High' (On)] [0]  
©Copyright 2016

## ATC Utility online monitor and control

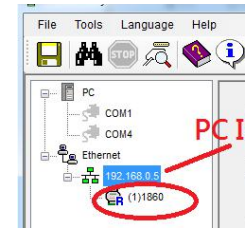
1. Turn the A-18 series Ethernet I/O module's switch to Normal mode and power on, over the Ethernet to link PC (note, maybe need the Router or HUB to meet this operation). Open the ATC Utility.



Follow below step to finish the A-18 Series Ethernet I/O module setup:

- 1) Click Ethernet
- 2) Type in IP address
- 3) Click  to search device

2. When finish the device search, the ATC Utility will show below graph, click device type directly.



3. When click the device type, the ATC Utility will show device's IO status. The user click DO to modify the output status.

