

## Model ATC-1200

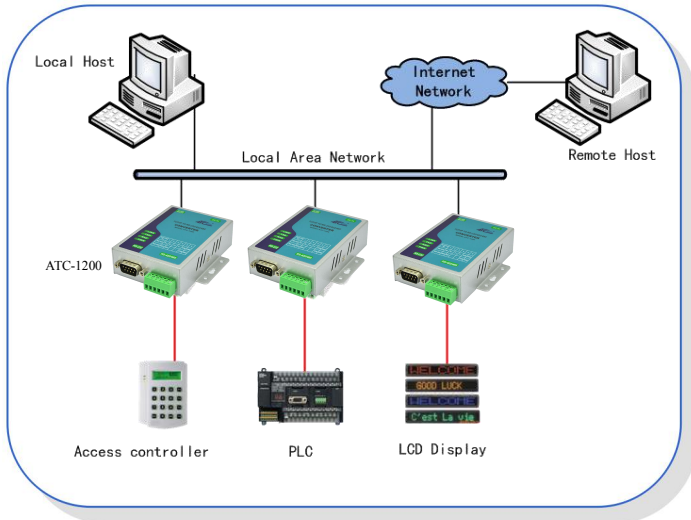
### Product Features

- RS-232/422/485 3 in 1 interface
- Support 10/100Mbps Ethernet port
- Supports 4-wire and 2-wire RS-485 work mode
- Automatic data direction control on RS-485
- Supports 24VDC industrial power supply
- Terminal block easily for RS-422/485 installation
- Configure via webpage and windows utility
- Supports virtual serial port, TCP Server/Client and UDP work mode
- Built-in watchdog
- CE, RoHS and FCC Certifications



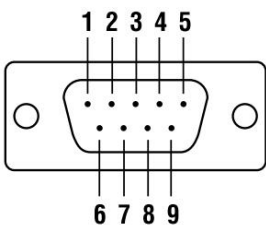
### Product Description

The ATC-1200 is a cost effective and highly integrated serial to Ethernet Converter. Support 10/100Mbps Ethernet and the serial port support RTS/CTS handshake control signal. Use the software kit user can easily configure and find the device, even forget the IP address. This serial server can work very well in virtual serial mode, this is very convenient for the user's software only support COM port. ATC-1200 is an industrial-strength network-based converter can help serial device with RS232/422/485 port like CNC, PLC, weighing scale, scanner and other device access to the 10/100Mbps Ethernet network.



### Pin Assignment

RS-232 DB-9(Male)



PIN	RS-232
2	RXD (IN)
3	TXD (OUT)
5	GND
7	CTS (OUT)
8	RTS (IN)
1/4/6/9	NC

RS-485/422 6-pin Terminal block

1	2	3	4	5	6
485+ (R+)	485- (R-)	T+	T-	VCC (9~24VDC)	GND

### Package Checklist

- ATC-1200 serial server 1 PCS
- Documentation and software CD 1PCS
- Power adapter 9V@1A

### Order Information

ATC-1200	One port RS-232/485/422 Serial Server	RS-232/422/485
ATC-1200M	3.3V TTL Serial Server Embedded Module	3.3V TTL serial port (Coming soon)

## Specifications

Serial Interface			
Interface Type	RS-232/485/422 3 in 1 (optional)		
Data Rate	RS-232	1200 ~ 115200bps	RS-422/485 1200 ~ 921600bps
Data Length	5,6,7,8 bits		
Parity	Odd, Even, None		
Stop Bits	1,1.5,2 bits		
Flow Control	None, Software: Xon/Xoff, Hardware: RTS/CTS		
Connector	RS-232	DB-9 male	
	RS-422/485	6-pin Terminal block	
Serial Line Protection	600W for RS-232/422/485		
Network Interface			
Interface Type	Ethernet 10/100Mbps (Auto-Sensing)		
Connector	8-pin RJ-45		
Magnetic Isolation Protection	Built-in 1.5KV		
System			
CPU	Embedding RISC CPU 100Mhz (100 MIPS)		
Memory	32KB SRAM.512KB Flash memory		
Software			
Network Protocols	ICMP,IP,TCP,UDP,DHCP,BOOTP,Telnet,DNS,HTTP,ARP		
Configure Options	Web Page,Windows Utility		
OS support	Windows95/98/ME/NT/2000/XP/2003/WIN7/WIN8/WIN10		
LED Indicators			
LINK	10/100Base-TX Link & Activity Indicator		
TXD	Date Transmitting from Ethernet to Serial		
RXD	Date Transmitting from serial to Ethernet		
PWR	Power indicator		
Power Supply	9~32VDC@1A		
Physical Characteristics			
Installation	DIN-Rail Mounting		
Housing	Iron (1mm)		
Weight	0.5Kg		
Dimensions	Without ears	100 × 67 × 26 mm(3.94 × 2.64 × 1.02 in)	
	With ears	100 × 86 × 26 mm(3.94 × 3.39 × 1.02 in)	
Environmental Limits			
Operating Temperature	-25 ~ 70°C (-13 ~ 158°F)		
Storage Temperature	-40 ~ 85°C (-40 ~ 185°F)		
Ambient Relative Humidity	5% to 95%(non-condensing)		
Standards and Certifications			
RoHS, CE, FCC			

## Contact us

Shenzhen ATC Technology Co., Ltd  
 Room 803, Block B, Building 4, Tian'an Cyber Park, Longgang District, Shenzhen, China, 518172  
 Tel: +86-755 - 8345 2531 / 8345 3318 Fax: +86-755-2899 8985 [www.szatc.com](http://www.szatc.com) email:sales@szatc.com

