

A-12 Series I/O Module Quick Start

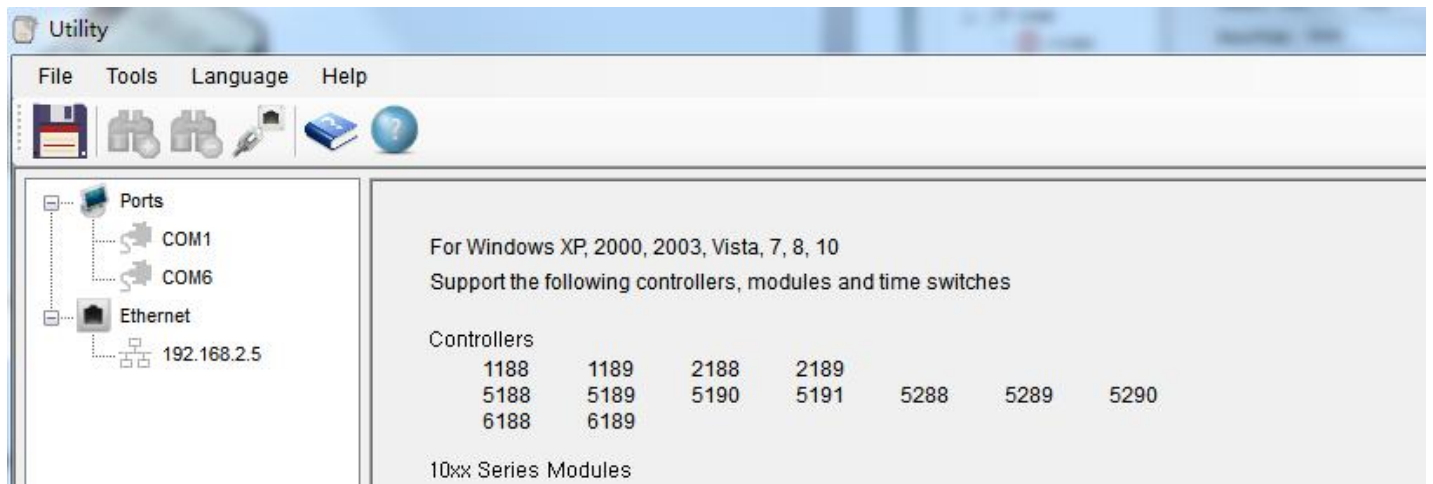



The ATC A-12 series I/O module had 2 protocol to setup the parameter.

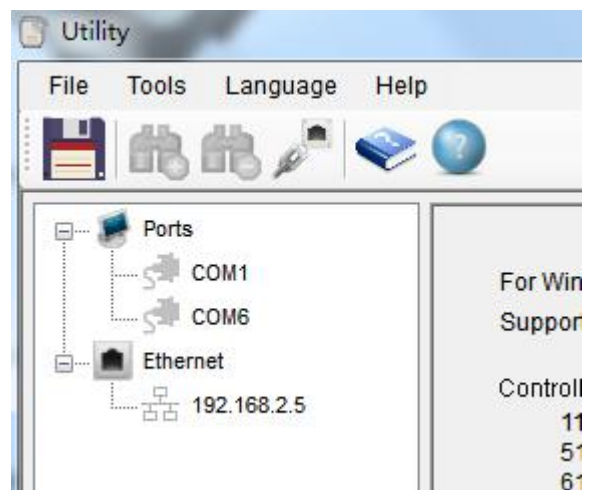
1. Over the USB port.
2. Over the RS-485 port.


Before the regular use, must finish the related setup process. And prepare below items to finish the setup.

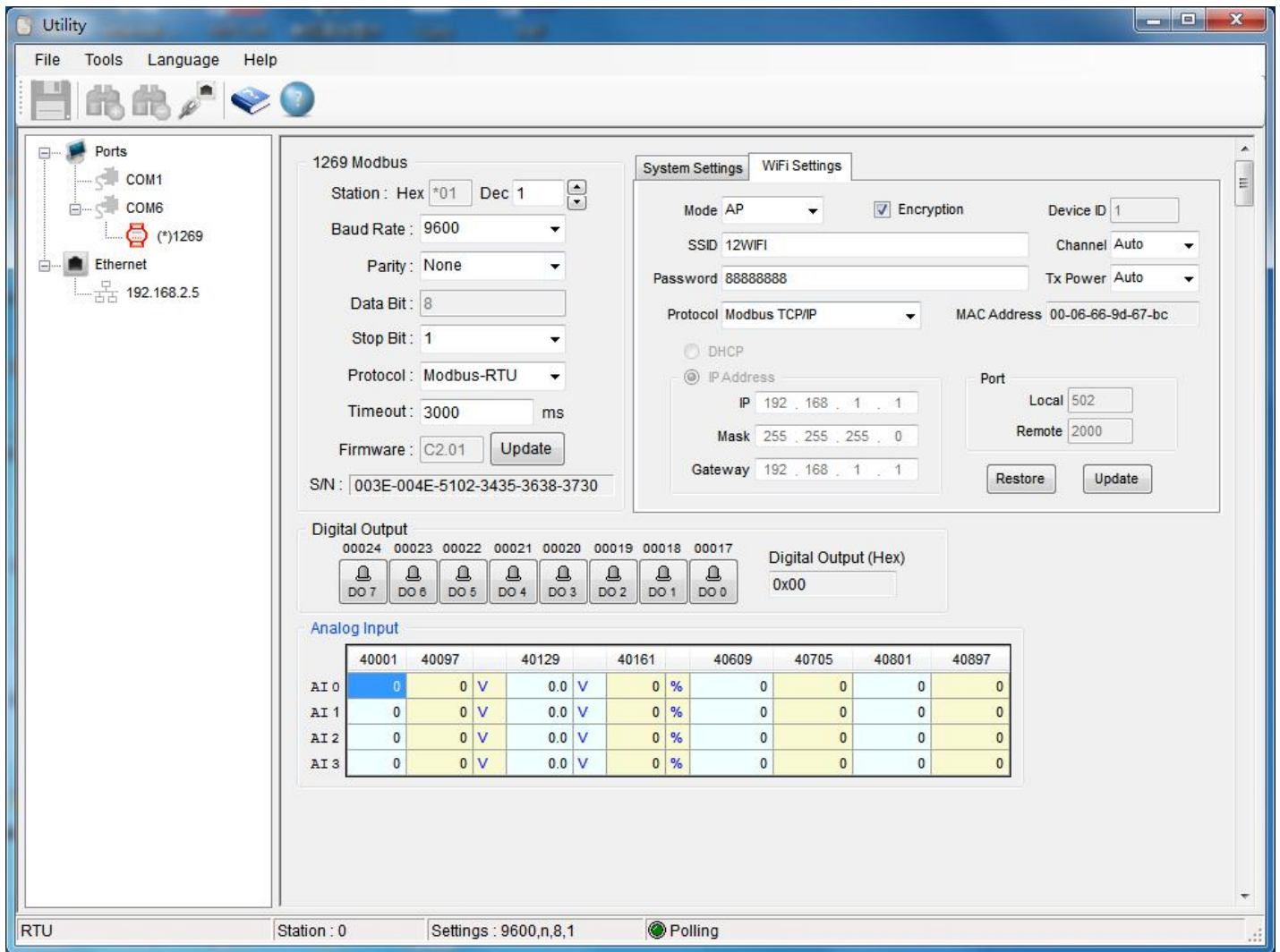
1. Install the ATC Utility software.
2. Power on the A-12 and turn the back switch to Init mode. Over the USB or RS-485 to link A-12 and PC.
3. Open the ATC Utility software.



5. Click the  to refresh the COM port.
6. Click the related COM port.



7. Click the  to search module.



The screenshot shows the 'Utility' software interface. On the left, a tree view shows 'Ports' with COM1, COM6, and Ethernet (192.168.2.5). The main area is divided into '1269 Modbus' and 'System Settings' / 'WiFi Settings' tabs. The Modbus settings include Station (Hex *01, Dec 1), Baud Rate (9600), Parity (None), Data Bit (8), Stop Bit (1), Protocol (Modbus-RTU), Timeout (3000 ms), and Firmware (C2.01). The WiFi settings include Mode (AP), Encryption (checked), Device ID (1), SSID (12WIFI), Channel (Auto), Password (88888888), Tx Power (Auto), Protocol (Modbus TCP/IP), MAC Address (00-06-66-9d-67-bc), and IP Address (192.168.1.1). Below these are Digital Output (DO 7-0) and Analog Input (AI 0-3) sections. The status bar at the bottom shows 'RTU', 'Station : 0', 'Settings : 9600,n,8,1', and 'Polling'.

1269 Modbus

Station : Hex *01 Dec 1

Baud Rate : 9600

Parity : None

Data Bit : 8

Stop Bit : 1

Protocol : Modbus-RTU

Timeout : 3000 ms

Firmware : C2.01 Update

S/N : 003E-004E-5102-3435-3638-3730

System Settings **WiFi Settings**

Mode AP Encryption Device ID 1

SSID 12WIFI Channel Auto

Password 88888888 Tx Power Auto

Protocol Modbus TCP/IP MAC Address 00-06-66-9d-67-bc

DHCP

IP Address

IP 192 . 168 . 1 . 1

Mask 255 . 255 . 255 . 0

Gateway 192 . 168 . 1 . 1

Port Local 502 Remote 2000

Restore Update

Digital Output

00024 00023 00022 00021 00020 00019 00018 00017

DO 7 DO 6 DO 5 DO 4 DO 3 DO 2 DO 1 DO 0

Digital Output (Hex) 0x00

Analog Input

	40001	40097	40129	40161	40609	40705	40801	40897
AI 0	0	0 V	0.0 V	0 %	0	0	0	0
AI 1	0	0 V	0.0 V	0 %	0	0	0	0
AI 2	0	0 V	0.0 V	0 %	0	0	0	0
AI 3	0	0 V	0.0 V	0 %	0	0	0	0

RTU Station : 0 Settings : 9600,n,8,1 Polling

8. Can setup the related parameter from above photo. When finish the setup, must click the **Update** button. And turn the A-12 module's switch to **Normal** mode.

9. Done.