



## ● Android APP Quick Start

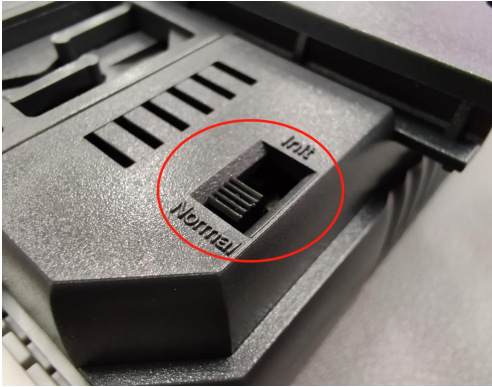
The A-52 WiFi series controller had installed an initial program in it. You can use the smart phone to communicate with it directly.

Operation Video:[http://www.szatc.com/uploads/download\\_file/A52QuickStart.mp4](http://www.szatc.com/uploads/download_file/A52QuickStart.mp4).

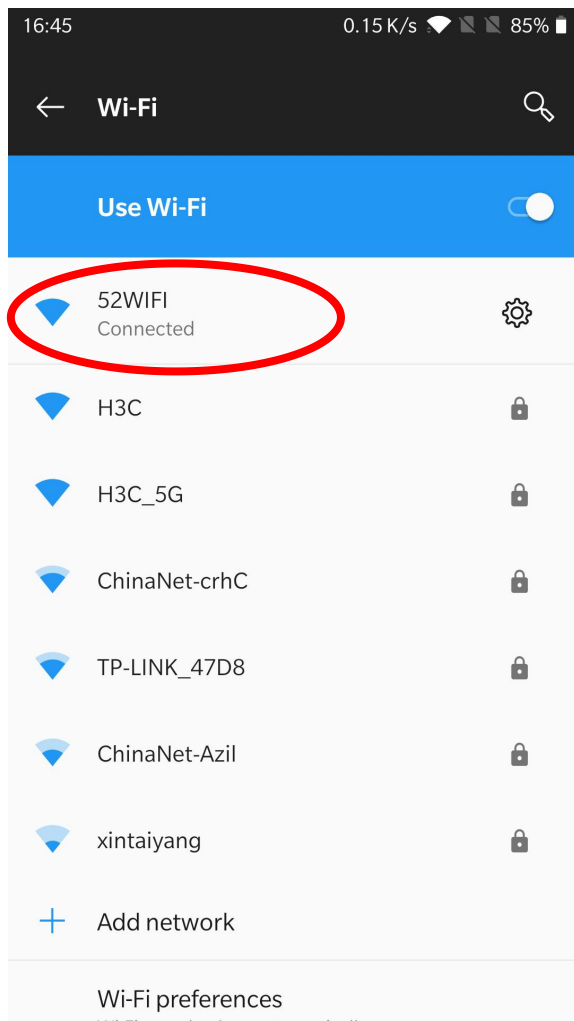
1. You can download it from the below web link:

[http://www.szatc.com/uploads/download\\_file/ATCWStationPro.zip](http://www.szatc.com/uploads/download_file/ATCWStationPro.zip)

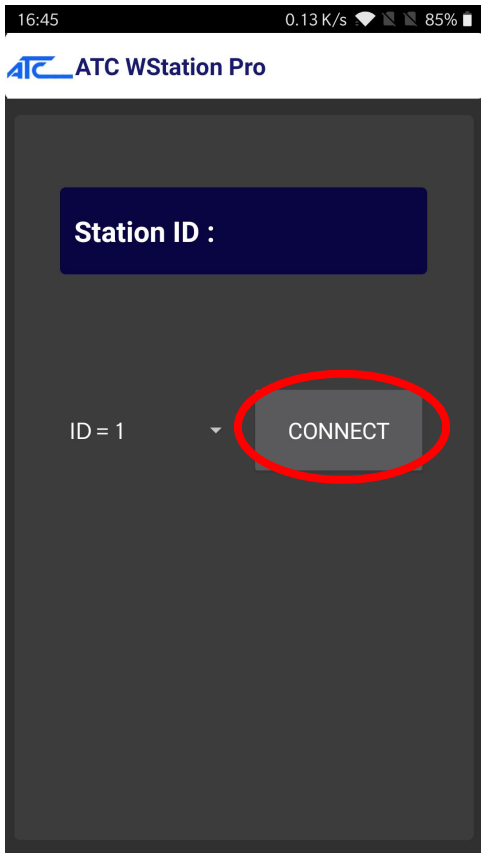
2. Power on the A 52 WiFi series controller, and turn the back switch to the Normal mode.



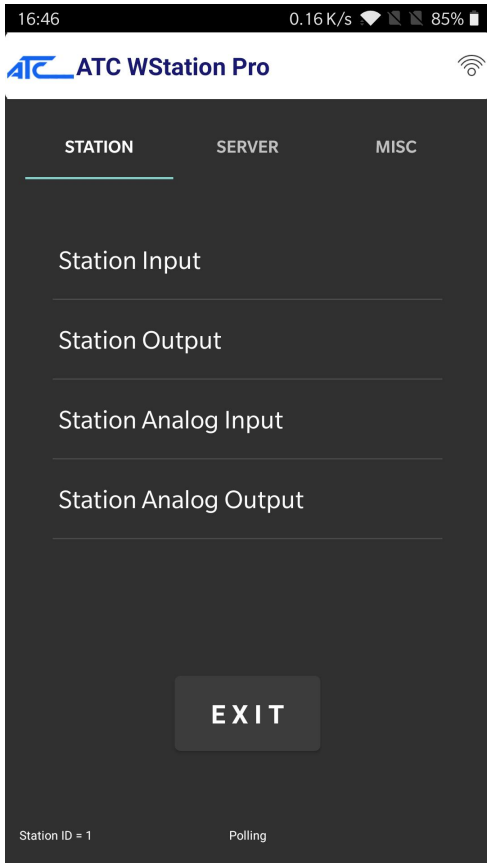
3. Use the smart phone WiFi Signal setup menu to search the controller's WiFi signal. The controller's initial WiFi SSID name is "52WIFI".



4. Click the “ATC WStation Pro” APP, and press the Connect button.



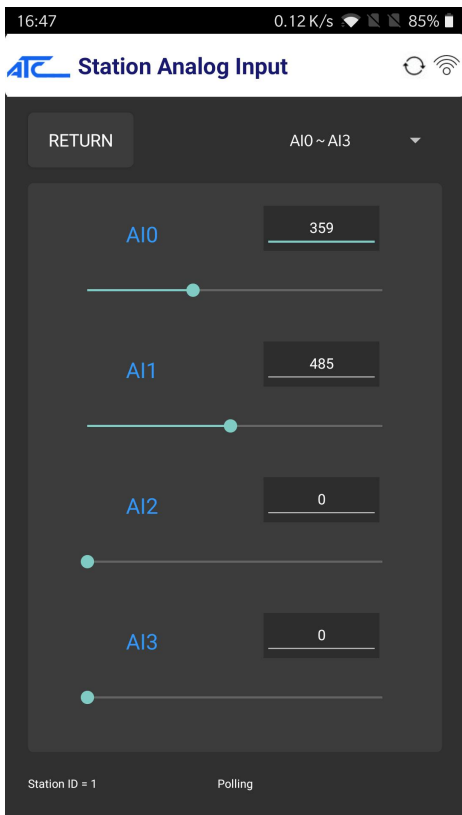
5. WStation Pro Main menu.



6. Click the Station Input to control the A-52 WiFi series controller’s output. The I0, I1, I2, I3 button can control the controller’s DO0, DO1, DO2, DO3. And the controller will show (trigger) the related graph on the LCM screen.

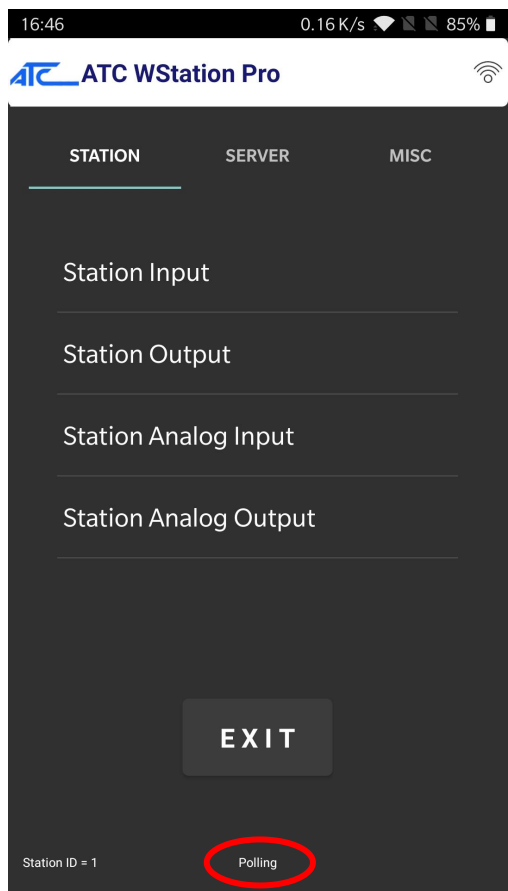


7. Click the Station Input I4 button can start the controller's Stop Watch function. The controller's LCM will also show the stop watch time value.
8. Press the Return button back to the main menu, and switch to the Station Analog Input. Adjust the AI0 or AI1 bar, the controller's LCM will show the current analog value. Adjust the bar value to 0 to escape the controller's LCM.



9. Complete the quick operation.

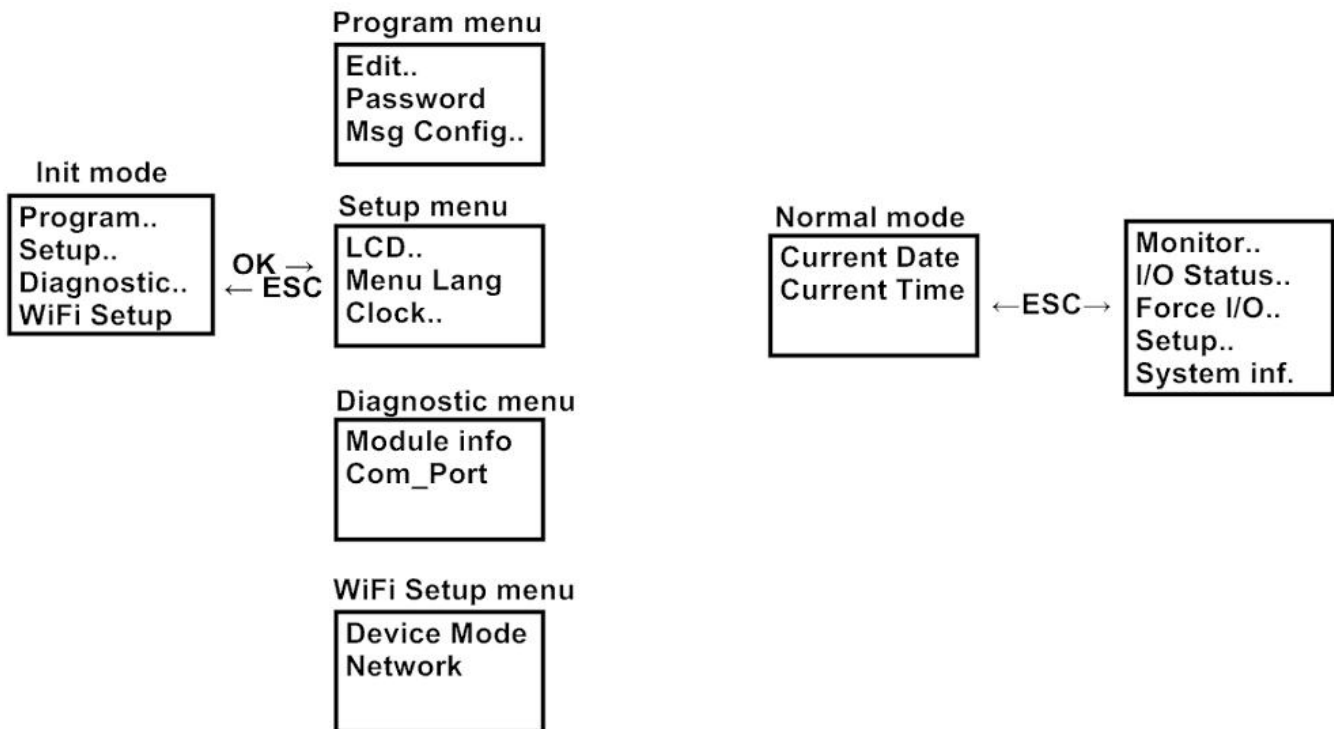
Note: If the APP's bottom appearing "Polling", it means the smart phone is correct to communicating with the A-52 WiFi controller. If the APP's bottom appearing "Receive Error!", it means the smart phone is can't communicate with the A-52 WiFi controller. Please follow the step2 step 4 to check the setting.



● **A-52 series WiFi controller Display and ATP 2 (text panel) menu structure**

Depend on controller's switch status (Init/Normal), the display will show below figure, and can via button to complete below setting.

Note: at Init mode, press ESC more than 3 Sec can modify the parameter, when complete press OK more than 3 Sec to store the setting.



## Quick Start:

### If would like to modify the program parameter

1. Turn controller switch to Init mode.
2. Choose Program -> Edit -> Edit Program
3. Display will show related block parameter, can use ▲UP or ▼DOWN button to select the block, and press OK more than 3 Sec to modify.
4. When complete press OK more than 3 Sec to store the setting.

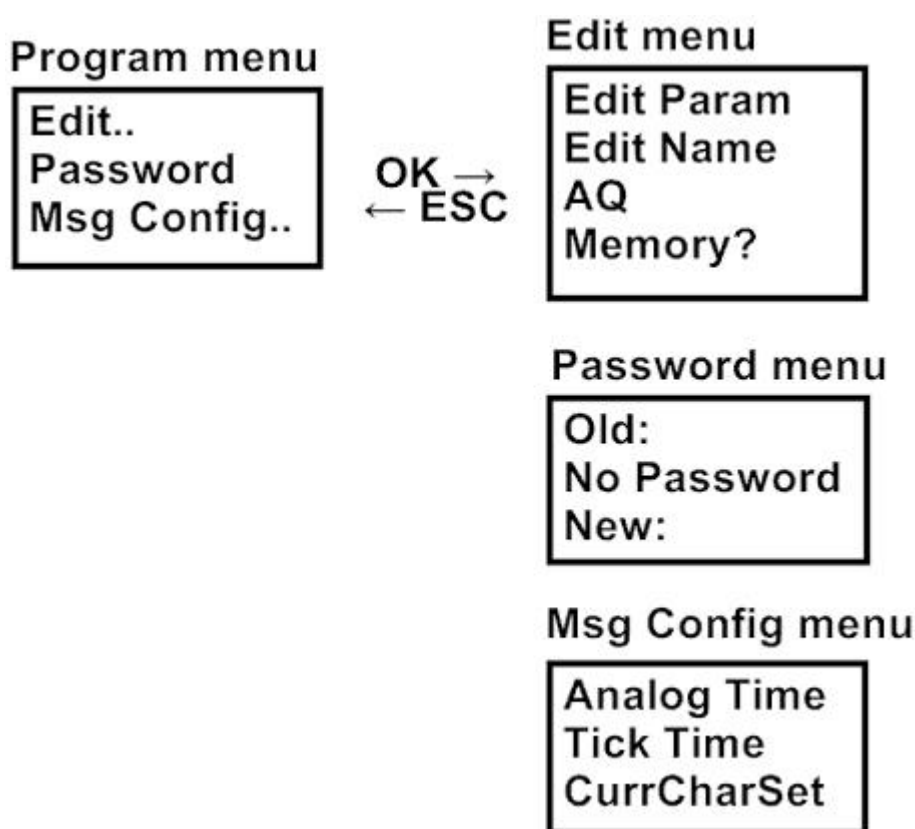
### If would like to monitor controller's IO status

1. Turn controller switch to Normal mode.
2. Display will show current time. Press ESC.
3. If choosing Monitor, can monitor all blocks' status and parameters.

If choosing I/O status, can monitor Input, Output and Flag's status. In the figure, D is mean Digital, A is mean Analog

## 1. Init mode

### 1.1 Program menu



#### 1.1.1 Edit menu

In the Edit menu, you can edit the parameter as above graph.

**Edit Param:** It will show all blocks No and parameter, you can use the ▲ ▼ button to choose the block you would like to edit. When choose the block, click the OK button to edit it, ESC button to switch. When complete, press ESC more than 3 second to save it.

**Edit Name:** It can name the block.

**AQ:** This setting is use for the controller's switch turn to Init mode, the controller's AQ output will hold on designate status.

AQ in Stop

Defined: range 00.00-10.00

Last: the last data

AQ Type: default or 4-20 mA

**Memory?:**You can detect how many block capacity can use in the controller.

#### 1.1.2 Password menu

A program password with up to 8 alphabetical characters can be assigned to protect the circuit program on the controller.You can use the Password menu to change the current password.

### 1.1.3 Msg Config

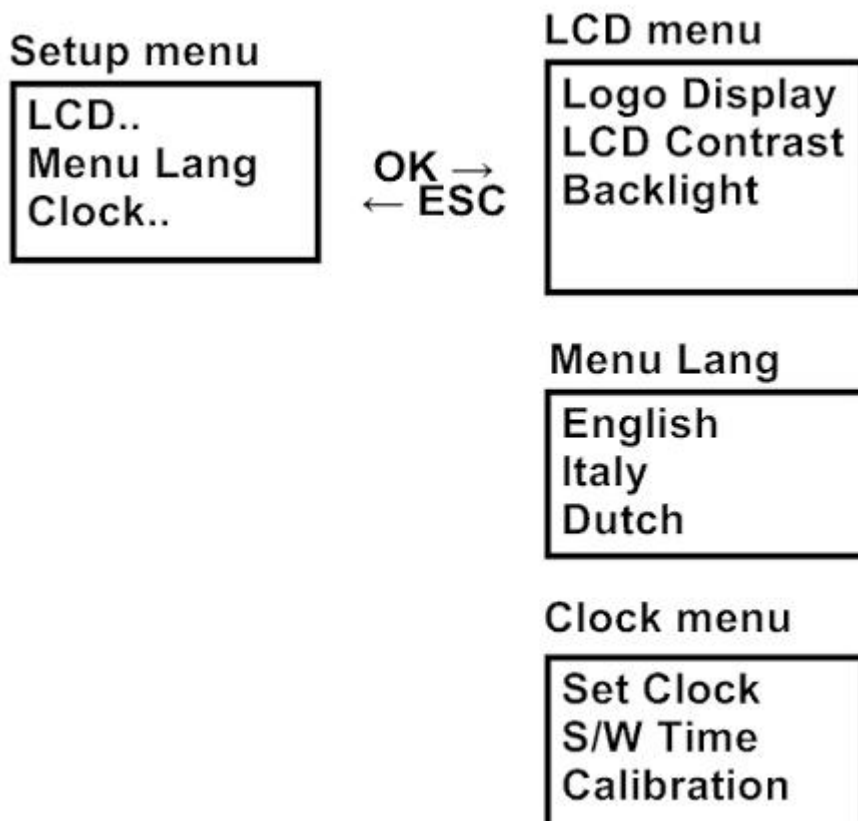
This menu can edit the Message Text's block display time. You can edit the Analog Time, Tick Time and CurrCharSet in this menu.

Analog Time: the initial value is 100 ms.

Tick Time: the initial value is 1000 ms (1 Sec).

Current Character set: CharSet1 or CharSet2.

### 1.2 Setup menu



#### 1.2.1 LCD menu

**Logo Display:** You can set up the Logo Display time when the controller power on.

**LCD Contrast:** You can adjust the controller's LCD contrast in this menu.

**Backlight:** You can turn on/off the controller's backlight in this menu.

#### 1.2.2 Menu Lang

The controller offer English, Italian, Dutch, Spanish, French, Chinese Big5, Chinese, German, Turkish and Russian Language menu options.

#### 1.2.3 Clock

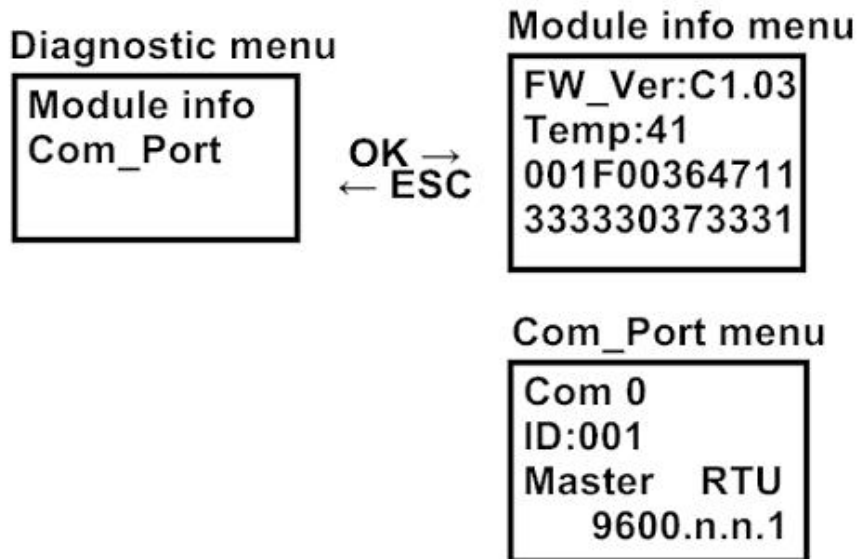
**Set Clock:** You can set the current date and time in this menu.

**S/W Time:** Set Up the Summer/Winter time.

**Calibration:** Set the Real Time Clock (RTC) calibration value. (Sec/Week)



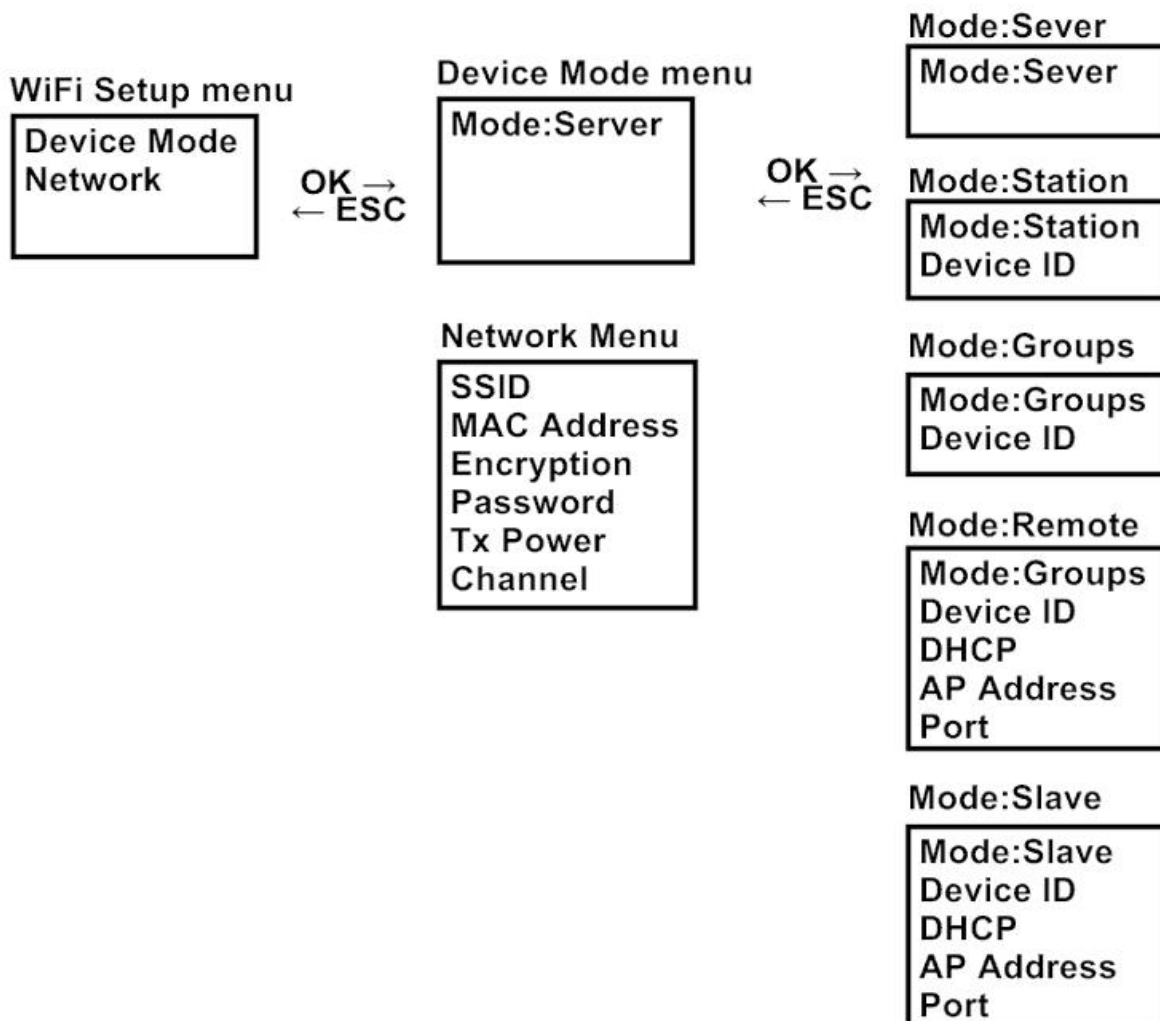
### 1.3 Diagnostic menu



**1.3.1 Module info:** You can detect the controller's firmware version, temperature and series number, the value just read only.

**1.3.2 Com\_Port:** You can detect the controller's com port parameters. The parameters just read only. Or you can use the ATC Editor software to edit it.

### 1.4 WiFi Setup menu



**1.4.1 Device Mode:**The A-52 WiFi series controller offers several operate mode option. You can choose the operate mode to meet your demand.

**Server:** It's the regular controller mode, which can communicate to the **Station & Groups** mode and **A-3288** transmitter. And also can connect to WiFi smart phone & tablet PC directly without WiFi AP router. One **Server** mode controller can communicate to maximum 7 units **Station, Groups** & WiFi smart phone (Can combine on demand). Note: In **Server** mode, the device can't communicate with the WiFi AP router.

**Station:** In this mode, the device will set to Extend IO Module. It means the **Server** device will read & write the **Station** device. Note: In Station mode, the device can't communicate with the WiFi AP router.

Device ID: range 1-7. You must set the Device ID for different value to communicate with the **Server** device for avoiding ID conflict.

**Groups:** It's the regular controller mode. And can let the data exchange with the **Server** device. Note: In Groups mode, the device can't communicate with the WiFi AP router.

Device ID: range 1-7. You must set the Device ID for different value to communicate with the **Server** device for avoiding ID conflict.

**Remote:** In this mode, the device will set to WiFi Remote IO Module. It can communicate with the WiFi AP router, but can't communicate with the Server device. The performance is as same as the ATC A-1 series Remote IO Module.

Device ID: range 1-255. You must set the Device ID for different value to communicate with the WiFi AP router for avoiding ID conflict.

DHCP: You can set DHCP ON for auto set IP address and Port. Off to edit the IP Address and Port on demand.

IP Address: Edit the IP address.

Port: Edit the port.

Remote Mode Address Mapping	
DI	07001~07032
DO	07257~07272
AI	47001~47008
AO	47065~47068

**Slave:** In this mode, the device will set to regular controller function. It can communicate with the WiFi AP router, but can't communicate with the **Server** device. The **Slave** mode can over the WiFi AP router to communicate other SCADA, OPC or controller.

Device ID: range 1-255. You must set the Device ID for different value to communicate with the WiFi AP router for avoiding ID conflict.

DHCP: You can set DHCP ON for auto set IP address and Port. Off to edit the IP Address and Port on demand.

IP Address: Edit the IP address.

Port: Edit the port.

### 1.4.2 Network

**SSID:** In the **Server** mode, you can name the **Sever** mode’s SSID. In the **Station & Groups** mode, you must type the **Server** item’s SSID. In the **Remote & Slave** mode, you must type the WiFi AP router’s SSID.

**MAC Address:** It’s the controller’s isolate value, read only.

**Encryption:** The initial setting is Off. You can set ON over WPA2.

**Password:** type the **Server** item or WiFi AP router’s password.

**TX Power:** Range 1-12, the initial setting is 0 (Auto).

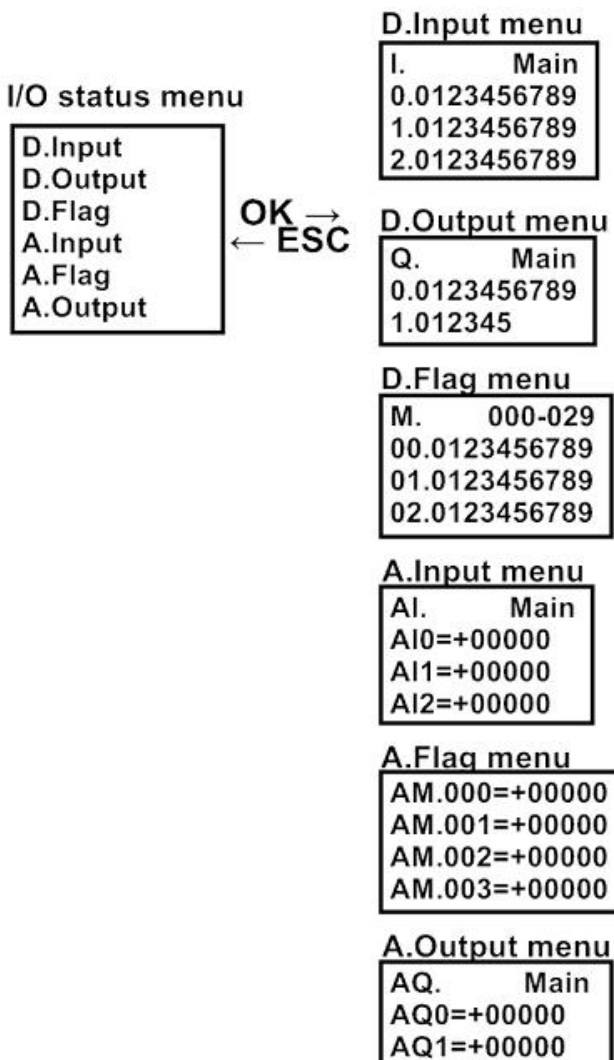
**Channel:** Range 1-14, the initial setting is 0 (Auto).

## 2. Normal mode

### 2.1 Monitor

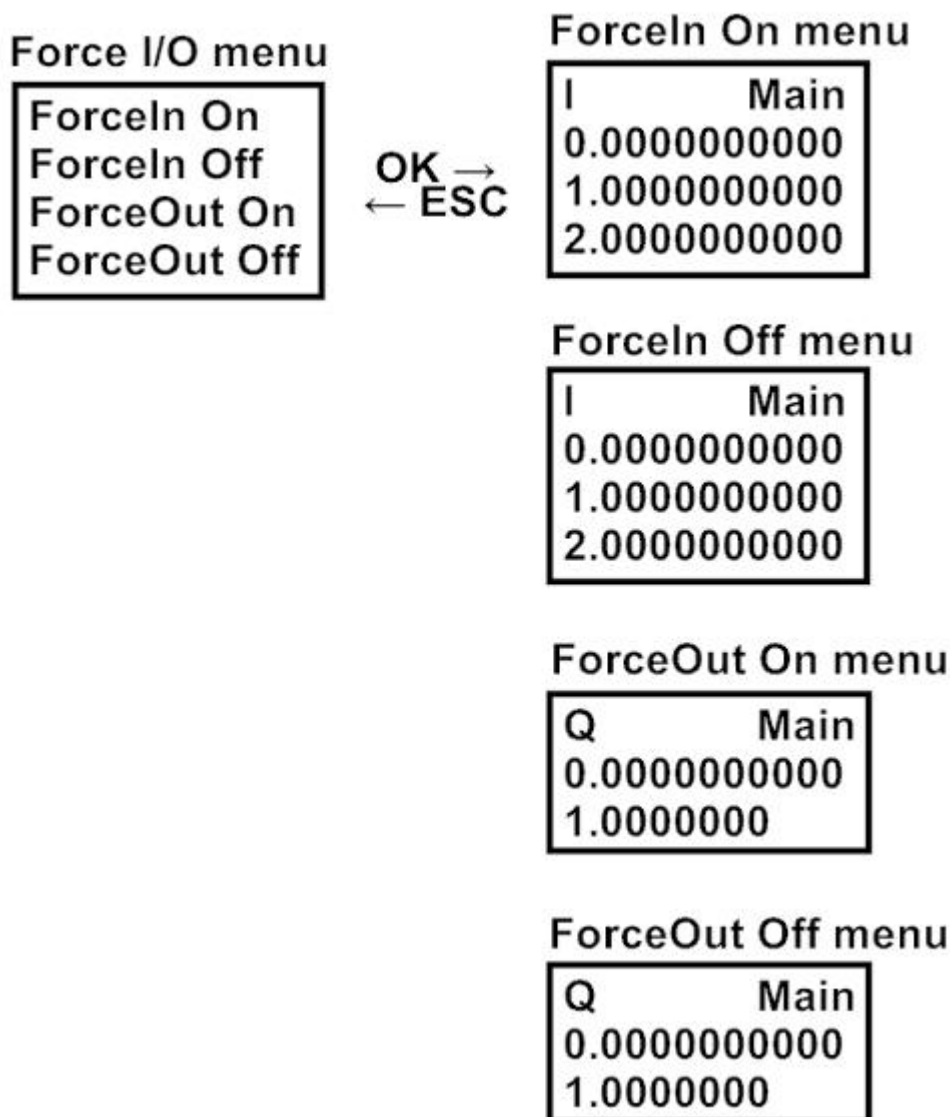
The Controller’s Display will show related block parameter, can use ▲UP or ▼DOWN button to select the block. Also can press OK more than 3 Sec to edit the parameters.

### 2.2 I/O Status



- 2.2.1 D. **Input:** You can read the Digital Input status.
- 2.2.2 D. **Output:** You can read the Digital Output status.
- 2.2.3 D. **Flag:** You can read the Digital Flag (M) status.
- 2.2.4 A. **Input:** You can read the Analog Input status.
- 2.2.5 A. **Flag:** You can read the Analog Flag (AM) status.
- 2.2.6 A. **Output:** You can read the Analog Output status.

### 2.3 Force I/O



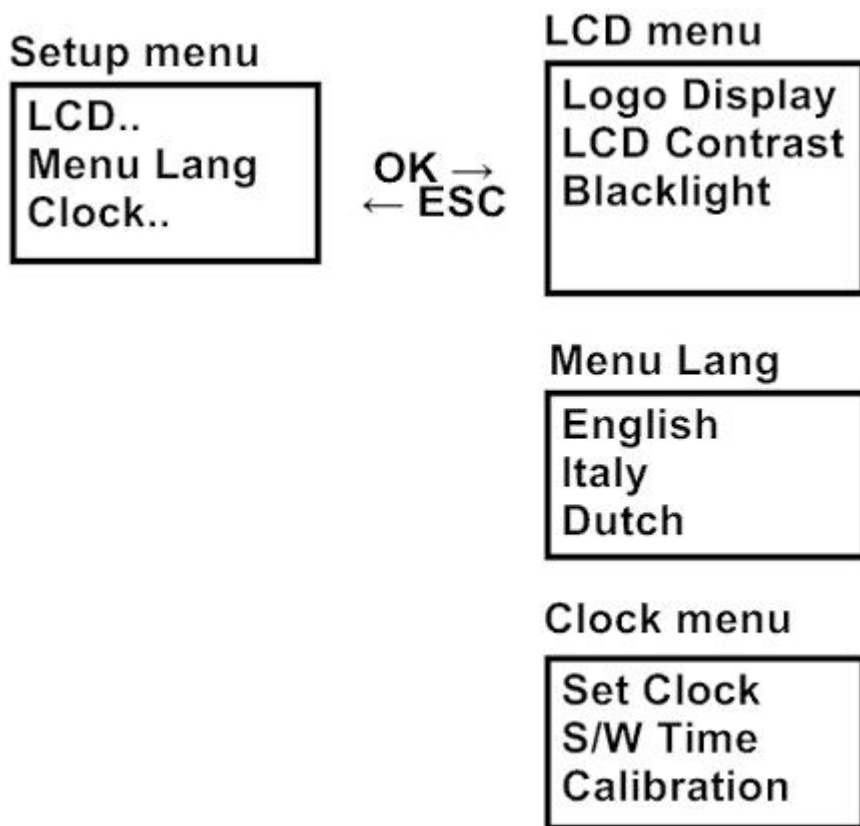
**2.3.1 Force In On:** You can Force On Input in this menu. Press OK more than 3 Sec to edit it. ESC & OK to choose the IOs, ▲ or ▼ to change the status. When complete setting, press OK more than 3 Sec to save it.

**2.3.2 Force In Off:** You can Force Off Input in this menu. Press OK more than 3 Sec to edit it. ESC & OK to choose the IOs, ▲ or ▼ to change the status. When complete setting, press OK more than 3 Sec to save it.

**2.3.3 Force Out On:** You can Force On Output in this menu. Press OK more than 3 Sec to edit it. ESC & OK to choose the IOs, ▲ or ▼ to change the status. When complete setting, press OK more than 3 Sec to save it.

**2.3.4 Force Out Off:** You can Force Off Output in this menu. Press OK more than 3 Sec to edit it. ESC & OK to choose the IOs, ▲ or ▼ to change the status. When complete setting, press OK more than 3 Sec to save it.

## 2.4 Setup



### 2.4.1 LCD menu

**Logo Display:** You can set up the Logo Display time when the controller power on.

**LCD Contrast:** You can adjust the controller's LCD contrast in this menu.

**Backlight:** You can turn on/off the controller's backlight in this menu.

### 2.4.2 Menu Lang

The controller offer English, Italian, Dutch, Spanish, French, Chinese Big5, Chinese, German, Turkish and Russian Language menu options.

### 2.4.3 Clock

**Set Clock:** You can set the current date and time in this menu.

**S/W Time:** Set Up the Summer/Winter time.

**Calibration:** Set the Real Time Clock (RTC) calibration value. (Sec/Week)

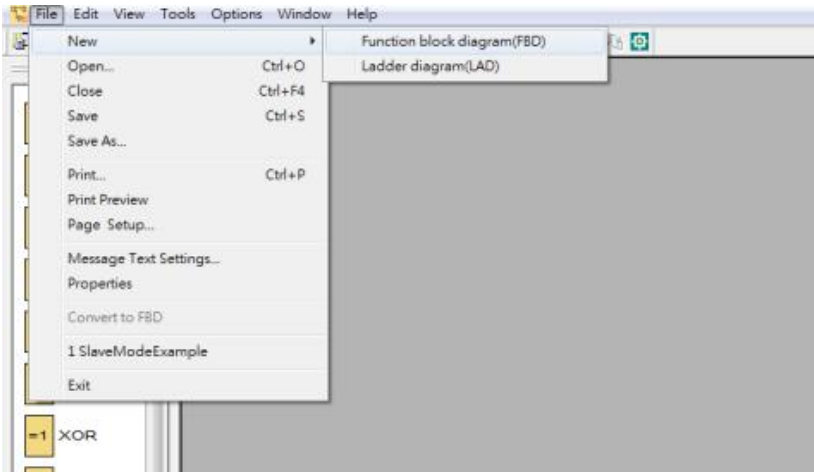
## 2.5 System inf.

You can read the device information on this menu. The information involves IP Address, MAC Address, SSID, Device Mode, Device ID, Port.

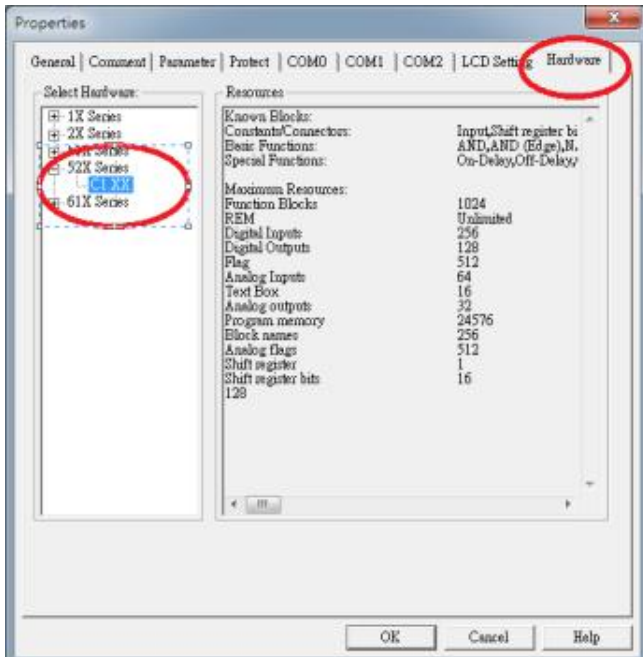
## 3. ATC Editor Quick Setup

ATC Editor download web link: <http://www.szatc.com/download/category/controller-io-module-software>

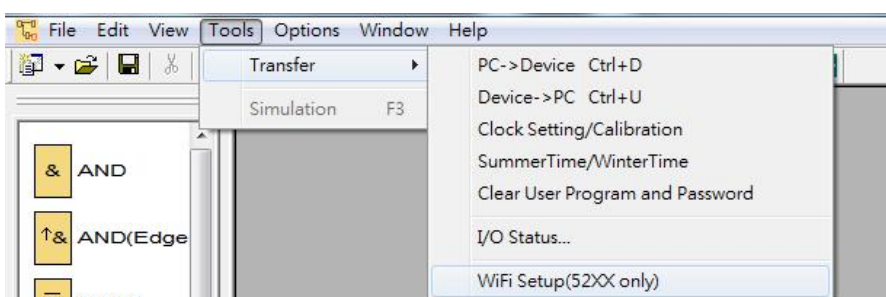
### 3.1 Open a new program file



### 3.2 Choose the hardware as the 52series



### 3.3 Choose the WiFi Setup



### 3.4 Finished the WiFi Setup

WiFi Setup

Device Mode **Server**

Encryption(WPA2) Enable

SSID 52WIFI

Password 88888888

TX Power 12 [auto:0, step:1~12]

Channel 0 [auto:0]

MAC Address

Device ID 0

OK Cancel Help

## Contact us

Shenzhen ATC Technology Co.,Ltd

Add. Room 803, Block D, Building 16, South Station Enterprise City,Port Road Nanhai District, Foshan, China,528251

Tel: (86 757) 8676 7929

---

NOTES:ATC company has been move to Foshan on March 29.2019

Website:www.szatc.com

E-mail:sales@szatc.com